

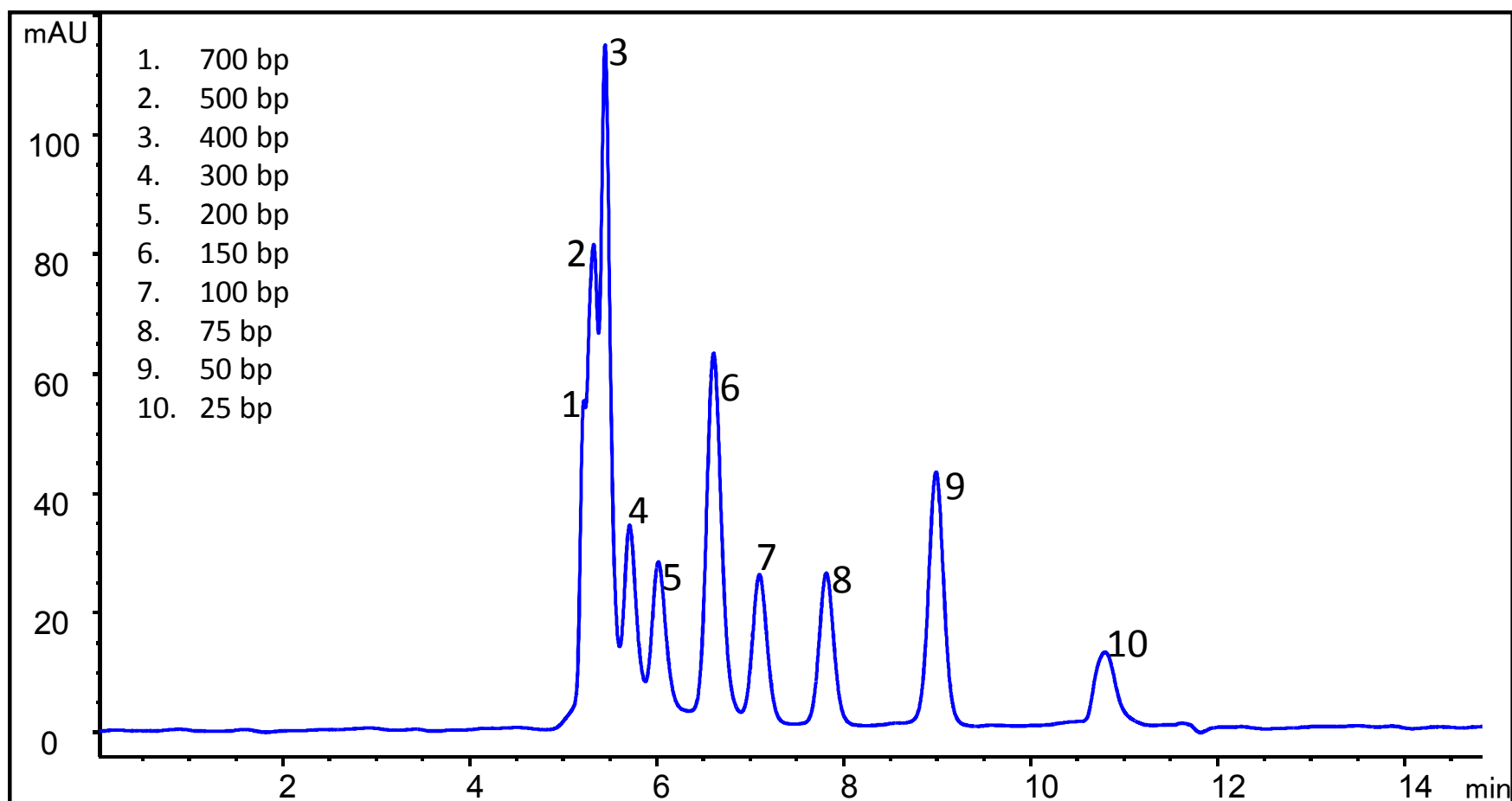
DNA Separation on Zenix™ SEC-300

Column: Zenix™ SEC-300 (3 μm, 300 Å, 7.8 x 300 mm)

Mobile phase: 150 mM Phosphate buffer, pH 7.0, Flow rate: 1.0 mL/min,

Detector: UV 260 nm, Column temperature: 25 °C,

Sample: DNA standards 0.5mg/mL each 700, 500, 400, 300, 200, 150, 100, 75, 50, 25 bp



DNA Separation on Proteomix SAX

Column: **Proteomix[®] SAX-NP5** (5 μ m, 4.6 x 250 mm)

Mobile phase: A: 20 mM Tris, pH 8.0, B: A + 1 M NaCl,

Flow rate: 0.5 mL/min, Detector: UV 260 nm, Column temperature: 25 $^{\circ}$ C,

Sample: DNA standard 0.5 mg/mL, Pressure: 135 bar

