

# Caffeine and Related Compounds using HILIC Mode

**ACE**<sup>®</sup>  
Ultra-inert  
UHPLC & HPLC Columns

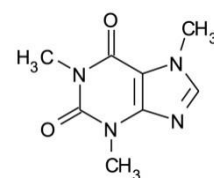
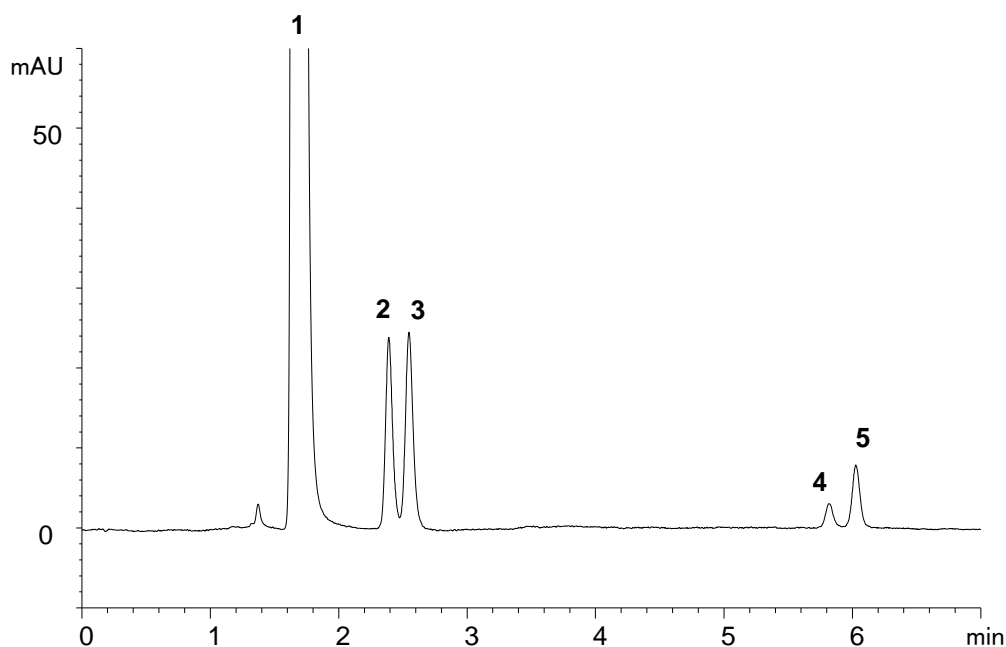
Application #AN4540

## Conditions

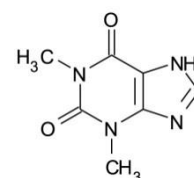
Column: ACE 5 HILIC-N  
Dimensions: 150 x 4.6 mm  
Part Number: HILN-5-1546U  
Mobile Phase: A: 10 mM ammonium formate pH 3.0 in MeCN/H<sub>2</sub>O (96:4 v/v)  
B: 10 mM ammonium formate pH 3.0 in MeCN/H<sub>2</sub>O (50:50 v/v)

Time (mins)	%B
0	0
15	100

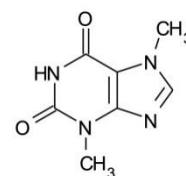
Flow Rate: 1.5 mL/min  
Injection: 2 µL  
Temperature: 15 °C  
Detection: UV, 275 nm  
Sample: Caffeine (25 mg/mL) with related substances theophylline, theobromine, xanthine and hypoxanthine at 0.5% w/w, dissolved in MeCN/H<sub>2</sub>O (90:10 v/v).



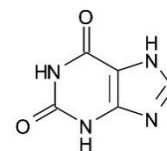
1. Caffeine



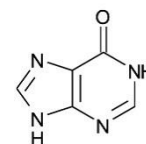
2. Theophylline



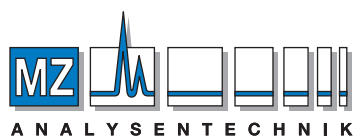
3. Theobromine



4. Xanthine



5. Hypoxanthine



## AUTHORIZED DISTRIBUTOR

MZ-Analysentechnik GmbH, Wöhlerstraße 2-6 • D-55120 Mainz  
Tel +49 6131 68 66 19, Fax +49 6131 68 66 20  
e-mail: info@mz-at.de, www.mz-at.de