



Transgenomic Carbohydrate Separations

Transgenomic offers USP and semi-prep columns with over of 29 different carbohydrate columns to best suit your lab's needs.

With a wide variety of cross linkages, metal ligands, bead sizes and column dimensions...Let us help you choose the perfect column(s) for your simplest as well as most complicated separations.

CARBOsep CHO 682 Column:

Lead Moiety, Best Selectivity

- ✓ Good for Complicated Samples, Excellent for Unknowns

CARBOsep CHO 87C Column:

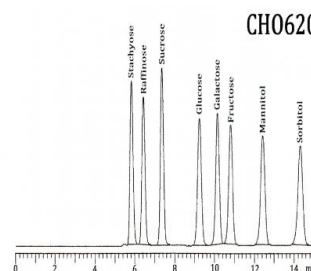
Calcium Moiety, Rugged, Long Lasting,

- ✓ Excellent Selectivity
- ✓ Fast Elution
- ✓ Typical Use: Manufacturing QC and R&D

CARBOsep CHO 620 Column:

Calcium Moiety, Rugged, Long Lasting,

- ✓ Excellent Selectivity
- ✓ Fast Elution
- ✓ Typical Use: Mono and Oligosaccharides separation and Sugar Alcohols



ANALYTES: Sugar Alcohols, Mono-, Di-, Tri- and Oligo Saccharides

SAMPLES: Beer, Cookies, Fruit Drinks, Manufacturing QC, BioFuel Research & Manufacturing, Dairy Products

ELUENT: De-ionized Water & Sodium Hydroxide
No Solvents Needed
No Gradients Needed

DETECTION: Refractive Index (RI) & Pulse Amperometric (PAD)



Corporate Headquarters
Transgenomic, Inc.
12325 Emmet Street, Omaha, NE 68164
Phone: +1(402) 452.5400 Fax: (402) 452 5401
Email: info@transgenomic.com
On the web at: www.transgenomic.com

