



MiniChrom FOR TOYOPEARL AND TSKgel

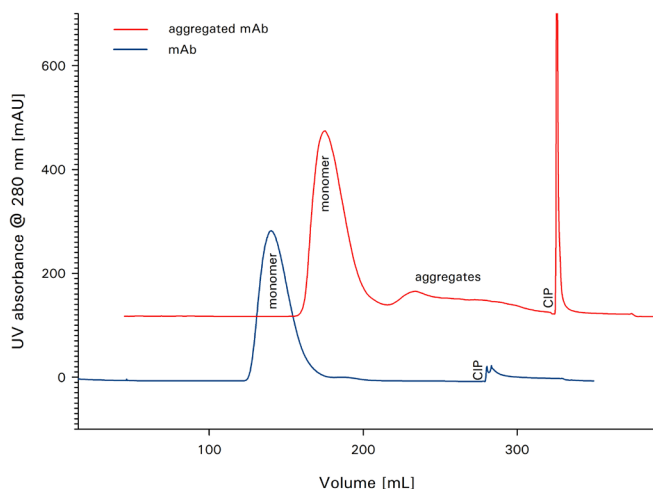
MiniChrom columns for TOYOPEARL and TSKgel are part of the method development platform available from Tosoh Bioscience. The columns (5 mL, 8 mm ID x 10 cm L) are prepacked with a range of TOYOPEARL or TSKgel chromatography resins. They are designed for method optimization, parameter screening and/or small scale purifications.

The 5 mL MiniChrom columns are the ideal tool to further optimize the purification method and to confirm the operational window after having selected a resin for a certain purification task by resin screening, e.g. with ToyoScreen cartridges on conventional LC systems or by high throughput screening using RoboColumns on robotic workstations.

KEY FEATURES

- Prepacked with TOYOPEARL or TSKgel resins
- Ready-to-use 5 mL prepacked columns
- Direct connection to common laboratory LC Systems
- Reliable and reproducible results
- Ideal for parameter screening and method optimization

MIXED-MODE SEPARATION ON MiniChrom MX-Trp-650M



➤ **Figure 1**

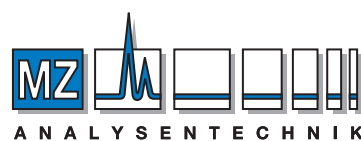
Column: MiniChrom MX-Trp-650M, 8 mm ID x 10 cm L, 5 mL
 Mobile Phase: A: 100 mmol/L acetate buffer (pH 4.3) + 200 mmol/L NaCl,
 B: 100 mmol/L acetate buffer (pH 5.6) + 500 mmol/L NaCl;
 Flow Rate: 150 cm/h; Gradient: 5 CV 100% A, 50 CV linear gradient from
 100% A to 100% B
 Sample: 5 mL monoclonal antibody 5 mg/mL
 5 mL aggregated monoclonal antibody (1 h, pH 2.7 @ RT) 5 mg/L

COLUMN CHARACTERISTICS

MiniChrom columns are made of biocompatible polyethylene and polypropylene. Each column is individually packed under optimum compression, ensuring consistent experimental results. The columns can be connected directly to any laboratory liquid chromatography system via standard HPLC connectors (M10-32 for 1/16" tubing) and is ready for equilibration in the buffer of choice. Two columns can be connected in series to increase the column height in order to model real conditions in pilot scale or for scale down experiments.

MiniChrom columns for TOYOPEARL and TSKgel are packed by Atoll GmbH and are available with a broad range of size exclusion, ion exchange, hydrophobic interaction, mixed-mode and Protein A affinity resins. Figure 1 shows the mixed-mode separation of a monoclonal antibody and its aggregates on a 5 mL MiniChrom MX-Trp-650M column.

TOYOPEARL and TSKgel resins are composed of a rigid polymethacrylate matrix that has excellent pressure/flow properties. For the specific features of the resins offered in MiniChrom format please refer to the respective product flyer or our Chromatographic Process Media Catalog.



AUTHORIZED DISTRIBUTOR

MZ-Analysetechnik GmbH
 Wöhlerstraße 2-6 • D-55120 Mainz
 Tel +49 6131 68 66 19
 Fax +49 6131 68 66 20
 e-mail: info@mz-at.de
 www.mz-at.de

Ordering Information

MiniChrom for TOYOPEARL and TSKgel

Part-No	Description	Volume (mL)	Particle size (μ m)	Dynamic Capacity (mg/mL resin)
0045101	TOYOPEARL GigaCap S-650M	5	75	136-176 (γ -globulin)
0045102	TOYOPEARL GigaCap S-650S	5	35	> 150 (γ -globulin)
0045103	TOYOPEARL GigaCap CM-650M	5	75	> 110 (γ -globulin)
0045104	TOYOPEARL GigaCap Q-650M	5	75	> 162 (BSA)
0045105	TOYOPEARL GigaCap Q-650S	5	35	> 170 (BSA)
0045106	TOYOPEARL GigaCap DEAE-650M	5	75	> 156 (BSA)
0045107	TSKgel SuperQ-5PW (20)	5	20	> 52-88 (BSA)
0045108	TOYOPEARL NH2-750F	5	45	> 70 (IgG)
0045121	TOYOPEARL Phenyl-650M	5	65	> 30-50 (Lysozyme)
0045122	TOYOPEARL Phenyl-650S	5	35	> 30-50 (Lysozyme)
0045123	TOYOPEARL Phenyl-600M	5	65	> 45-65 (Lysozyme)
0045124	TOYOPEARL PPG-600M	5	65	> 45-55 (Lysozyme)
0045125	TOYOPEARL Butyl-650M	5	65	> 30-50 (Lysozyme)
0045126	TOYOPEARL Butyl-650S	5	35	> 30-50 (Lysozyme)
0045127	TOYOPEARL Butyl-600M	5	65	> 40-60 (γ -globulin)
0045151	TOYOPEARL MX-Trp-650M	5	65	> 75 (IgG)
0045161	TOYOPEARL AF-rProtein A HC-650F	5	45	> 68 (IgG)
0045171	TOYOPEARL HW-40F	5	45	n.a.

MiniChrom Columns packed with other TOYOPEARL or TSKgel resins are available on request.