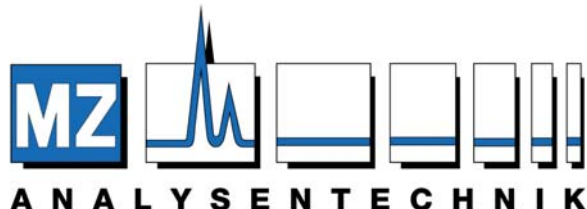




Wöhlerstr. 2-6
D-55120 Mainz

Tel. 06131/68 66 19
Fax 06131/68 66 20

<http://www.mz-at.de>
USt.-Id.-Nr.: DE 149057837



Shodex™



HPLC Columns

Stock sale

Until 31.12.2016

Columns availability

Following columns will be offered with 40% discount until **31st December 2016**. If the column you wish is still here contact us now, tomorrow can be too late!

Separation mode	Part number	Column name	Units available (40%)
Multimode		Asahipak GS-320 7E	1
Multimode	F7600008	Asahipak GS-620 HQ	2
HILIC	F6710030	Asahipak NH2P-50G 3A	2
HILIC	F6710100	Asahipak NH2P-LF	2
Reversed Phase	F7620001	Asahipak ODP-50 6E	3
GPC Clean-up	F6810022	CLNpak PAE-2000	1
Organic SEC	F6208390	GPC AT-806MS	1
Organic SEC	F6028570	GPC HFIP-807	2
Organic SEC	F6208730	GPC HT-806	1
Organic SEC	F6028110	GPC K-801	1
Organic SEC	F6028130	GPC K-803	1
Organic SEC	F6028195	GPC K-804L	1
Organic SEC	F6102301	GPC K-2001 (Preparative)	2
Organic SEC		GPC K-G 8B (Prep.)	3
Organic SEC	F6028220	GPC KD-802	1
Organic SEC	F6028250	GPC KD-805	1
Organic SEC	F6028270	GPC KD-807	2
Organic SEC	F6028118	GPC KF-404 HQ	3
Organic SEC	F6028119	GPC KF-405L HQ	1
Organic SEC	F6028060	GPC KF-806	1



Organic SEC	F6208600	GPC UT-802.5	5
Hydrophobic Interaction	F6110003	HIC PH-814	2
Ion Chromatography		IC SI-91 4C	9
Ion Chromatography	F6995250	IC T-521 (PEEK)	1
Ion Chromatography		IC Y-521L	1
Aqueous/Organic SEC		MSpak GF-310 4D	1
Aqueous SEC (GFC)		PROTEIN KW-G 8B (Prep.)	1
Reversed Phase	F6714011	ODP2 HPG-2A	2
Aqueous SEC (GFC)		OHpak SB-401 4E	1
Reversed Phase		RSpak DE-413S	1
Reversed Phase	F7001001	RSpak DS-613	1
Reversed Phase	F6700140	RSpak DS-G	2
Ion Exclusion	F6378030	RSpak KC-811	1
Ion Exclusion	F6378033	RSpak KC-811 6E	4
Reversed Phase	F7008140	RSpak NN-814	1
Reversed Phase	F6709558	RSpak RP18-G	1
Reversed Phase	F6650053	Silica 5C8 4E	1
Reversed Phase	F6650051	Silica 5SIL 4E	1
Reversed Phase	F6651011	Silica C18 4E	1
		STANDARD P-1	1
		STANDARD P-2	1
		STANDARD P-3	1
Ligand Exchange & SEC	F6378035	SUGAR KS-804	2
Ligand Exchange & HILIC		SUGAR SC-1211G 4A	4
Aqueous SEC (GFC)		PROTEIN KW-402.5 2E (Semi-micro)	2
Aqueous SEC (GFC)		PROTEIN KW-403 2D (Semi-micro)	1