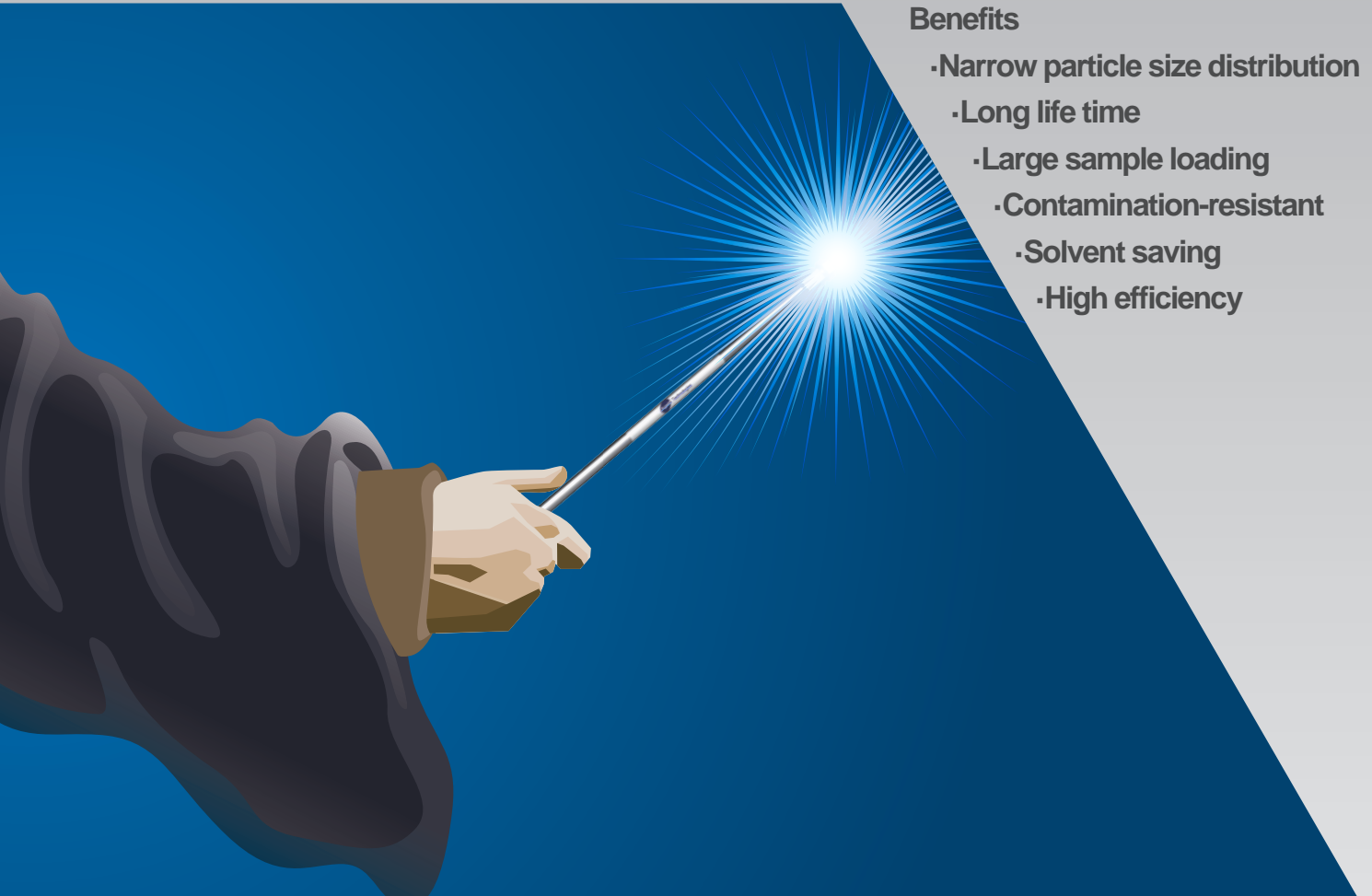


### Benefits

- Narrow particle size distribution
- Long life time
- Large sample loading
- Contamination-resistant
- Solvent saving
- High efficiency



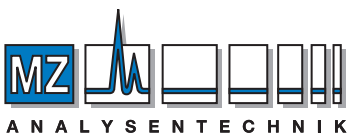
---

## BONNA-AGELA TECHNOLOGIES

# New Bonshell UHPLC Columns

## A faster choice to speed up your HPLC analysis

---



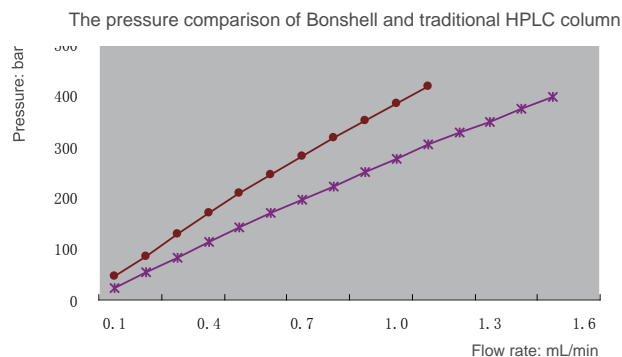
MZ-Analysentechnik GmbH  
Wöhlerstraße 2-6 • D-55120 Mainz  
Tel +49 6131 68 66 19  
Fax +49 6131 68 66 20  
e-mail: [info@mz-at.de](mailto:info@mz-at.de)  
[www.mz-at.de](http://www.mz-at.de)

Webside: [www.bonnaagela.com](http://www.bonnaagela.com)  
E-mail: [info@bonnaagela.com](mailto:info@bonnaagela.com)

Best Value  
Guaranteed Product Quality  
Innovation to Benefit Customers

Bonshell columns represent a new level of performance through a shell structure.

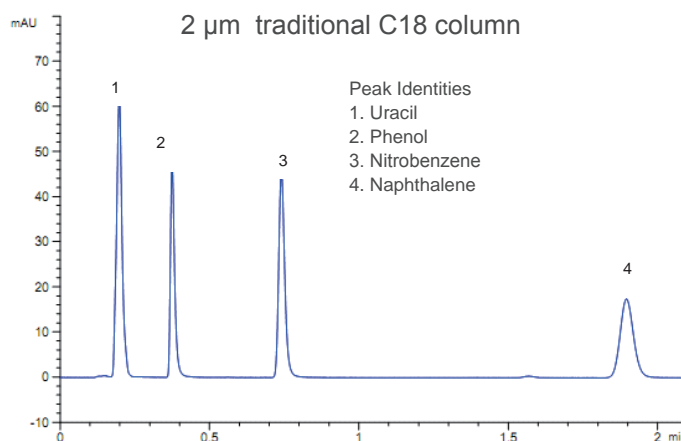
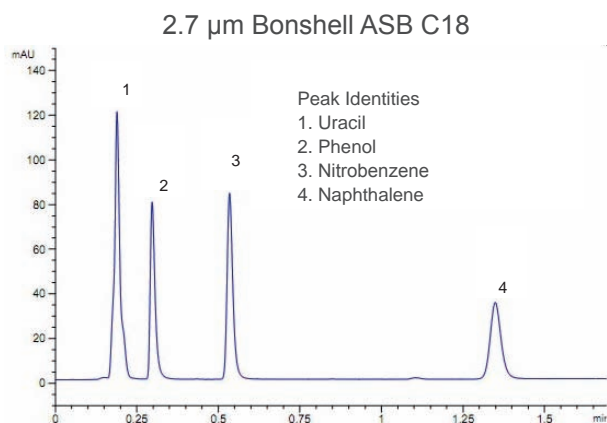
It is packed with uniform particles, the structure of which is 1.7  $\mu\text{m}$  of solid core coated with 0.5  $\mu\text{m}$  of porous layer. It is the best choice if you want to speed up your HPLC analysis without an expensive UHPLC instrument.



The column pressure low to 60% compared to that of UHPLC in the same column efficiency  
column: 2.1\*50 mm, mobile phase: ACN : H<sub>2</sub>O=70:30, 25 C

## Extremely improve the column efficiency, speed, resolution and sensitivity

Column: 2.1\*50 mm Mobile phase: 50% water and 50 % ACN  
Flow rate: 0.5 mL/min Temperature: 30 C Detection: UV 254 nm



	Bonshell ASB C18	2 $\mu\text{m}$ traditional C18
Column efficiency	9600	9100
Pressure	175 bar	275 bar

## Ordering Information

Pore size: 90 Å  
Specific surface area: 50 m<sup>2</sup>/g  
Pressure: ≤ 9000 psi (600 bar)

Specification	Bonshell ASB C18	Bonshell C18
2.7 $\mu\text{m}$ 2.1*30 mm	SS920302-0	SC920302-0
2.7 $\mu\text{m}$ 2.1*50 mm	SS920502-0	SC920502-0
2.7 $\mu\text{m}$ 2.1*100 mm	SS921002-0	SC921002-0
2.7 $\mu\text{m}$ 3.0*30 mm	SS920303-0	SC920303-0
2.7 $\mu\text{m}$ 3.0*50 mm	SS920503-0	SC920503-0
2.7 $\mu\text{m}$ 3.0*100 mm	SS921003-0	SC921003-0
2.7 $\mu\text{m}$ 4.6*50 mm	SS920505-0	SC920505-0
2.7 $\mu\text{m}$ 4.6*75 mm	SS920805-0	SC920805-0
2.7 $\mu\text{m}$ 4.6*100 mm	SS921005-0	SC921005-0