

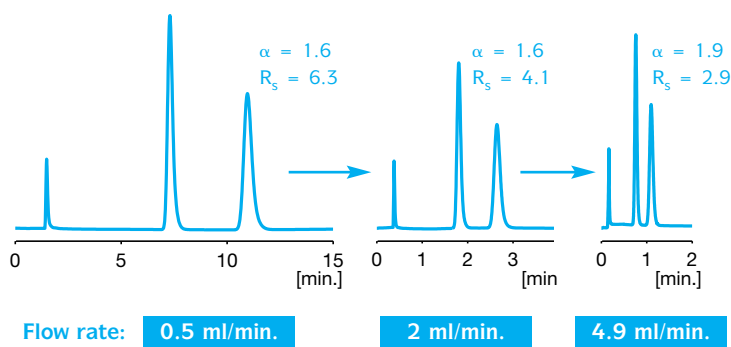


Taking reversed phase chiral separations to a new level –

Kromasil® CelluCoat™ RP

Designed to give you a highly efficient chiral stationary phase for reversed phase chiral chromatography. No pressure limits* and the unique 3 μm particles enable fast, efficient and high resolution analyses. Kromasil CelluCoat RP is based on the same in-house developed silica matrix and the same selector, tris-[3,5-dimethylphenyl] carbamoyl cellulose as Kromasil CelluCoat.

Faster baseline separations



Common conditions:

Solute: Warfarin
 Mobile phase: Acetonitrile/Water, 100 mM phosphoric acid (40/60)
 Stationary phase: Kromasil CelluCoat RP, 3 μm
 Column size: 4.6 \times 50 mm
 Temperature: 22°C
 Detection: UV 215 nm

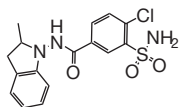
Recommended mobile phases for Kromasil CelluCoat RP

Type of compound	Aqueous solution	Organic modifier	Org. modifier part range	Temperature range
Acidic	<ul style="list-style-type: none"> – 50 mM Phosphate buffer, pH 2.0 – Phosphoric acid, aqueous solution, pH 2.0 – 100 mM Aqueous hexafluorophosphate solution, pH 2.0 – 0.1% Acetic acid 	Acetonitrile, methanol, ethanol, 2-propanol	10 – 85%	5 – 40°C
Neutral	<ul style="list-style-type: none"> – Water – 100 mM Aqueous hexafluorophosphate solution 	Acetonitrile, methanol, ethanol, 2-propanol	10 – 100%	5 – 40°C
Basic	<ul style="list-style-type: none"> – 20 mM Borate buffer, pH 9.0 – 20 mM Phosphate buffer, pH 8.0 – 100 mM Aqueous hexafluorophosphate solution 	Acetonitrile, methanol, ethanol, 2-propanol	10 – 85%	5 – 25°C

*Kromasil CelluCoat RP can withstand flow rates equivalent to pressures of up to 400 bar – i.e. the approximate limit for most HPLC systems.

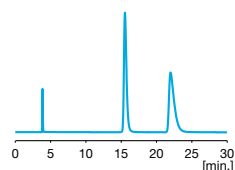
Kromasil CelluCoat RP Applications

Indapamide



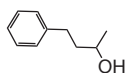
Conditions:

Stationary phase: Kromasil CelluCoat RP, 3 μ m
 Column: 4.6 \times 150 mm
 Mobile phase: Acetonitrile/Water (40/60)
 Flow rate: 0.5 ml/min
 Temperature: 22°C
 Detection: UV 254 nm



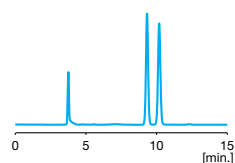
k'_1 3.02
 k'_2 4.69
 N_1 58900
 N_2 30900
 α 1.6
 R_s 6.6

4-Phenyl-2-butanol



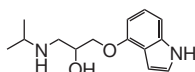
Conditions:

Stationary phase: Kromasil CelluCoat RP, 3 μ m
 Column: 4.6 \times 150 mm
 Mobile phase: Acetonitrile/Water (40/60)
 Flow rate: 0.5 ml/min
 Temperature: 22°C
 Detection: UV 220 nm



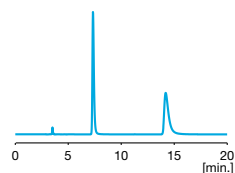
k'_1 1.48
 k'_2 1.71
 N_1 105900
 N_2 104400
 α 1.2
 R_s 2.8

Pindolol



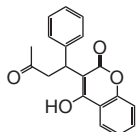
Conditions:

Stationary phase: Kromasil CelluCoat RP, 3 μ m
 Column: 4.6 \times 150 mm
 Mobile phase: Acetonitrile/Water, 50 mM sodium borate (40/60)
 Flow rate: 0.5 ml/min
 Temperature: 22°C
 Detection: UV 254 nm



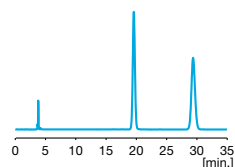
k'_1 1.09
 k'_2 3.04
 N_1 88800
 N_2 42200
 α 2.8
 R_s 14.2

Warfarin



Conditions:

Stationary phase: Kromasil CelluCoat RP, 3 μ m
 Column: 4.6 \times 150 mm
 Mobile phase: Acetonitrile/Water, 100 mM phosphoric acid (40/60)
 Flow rate: 0.5 ml/min
 Temperature: 22°C
 Detection: UV 254 nm



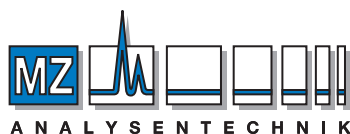
k'_1 4.15
 k'_2 6.72
 N_1 92700
 N_2 77400
 α 1.6
 R_s 11.2

Availability

Kromasil CelluCoat RP is available in 3 μ m as pre-packed columns. The standard dimensions are 4.6 \times 50 mm and 4.6 \times 150 mm. Other column dimensions are available upon request.

Product codes

Kromasil 3-CelluCoat RP 4.6 \times 50 mm
 Kromasil 3-CelluCoat RP 4.6 \times 150 mm



MZ-Analystechnik GmbH
 Wöhlerstraße 2-6 • D-55120 Mainz
 Tel +49 6131 68 66 19
 Fax +49 6131 68 66 20
 e-mail: info@mz-at.de
 www.mz-at.de

Eka Chemicals AB, Separation Products, SE-445 80 Bohus, Sweden.
 Tel. +46 31 58 70 00 Fax +46 31 58 77 27

NAFTA countries: Akzo Nobel / Eka Chemicals Inc.
 281 Fields Lane, Brewster, NY 10509, U S A.
 Tel. +1 845 276 8223 Fax +1 845 277 1406

China: Akzo Nobel / Eka Chemicals
 No. 12 Yumin Rd., Chaoyang District, Beijing 100029, China.
 Tel. +86 10 82251233 Fax +86 10 82251911
 Cell +86 133 8116 7168

kromasil@eka.com

www.kromasil.com

0803