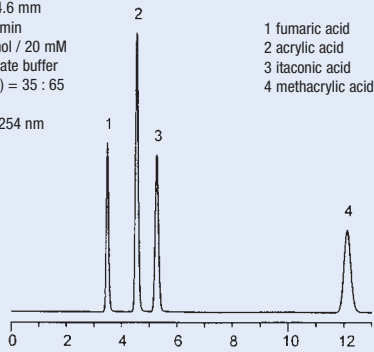


PerfectSil® 100 C8-3

Carbonic Acids

Column: PerfectSil® C8-3
150 x 4.6 mm
Flow: 1.0 ml/min
Eluent: methanol / 20 mM phosphate buffer (pH 7.0) = 35 : 65
Temperature: 40 °C
Detection: UV @ 254 nm
Inj.-Volume: 1 µL

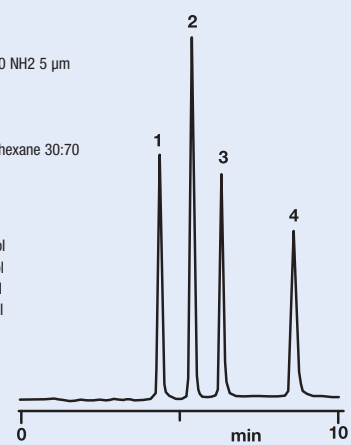


PerfectSil® 100 NH2

Tocopherol

Column: PerfectSil® 100 NH2 5 µm
250 x 4.6 mm
Flow: 1.0 ml/min
Inj. volume: 1.0 µl
Eluent: ethylacetate : hexane 30:70
Temperature: 30 °C
Detection: UV @ 290 nm

1 α-tocopherol
2 β-tocopherol
3 γ-tocopherol
4 δ-tocopherol

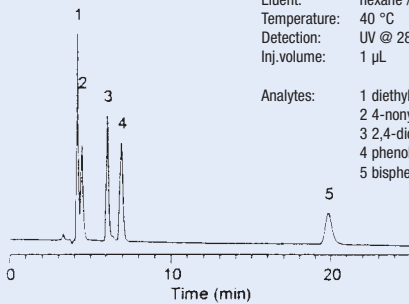


PerfectSil® 100 CN-3

Separation of Phenoles normal-phase mode

Column: PerfectSil® CN-3
250 x 4.6 mm
Flow: 1.0 ml/min
Eluent: hexane / ethanol = 90/10
Temperature: 40 °C
Detection: UV @ 280 nm
Inj. volume: 1 µL

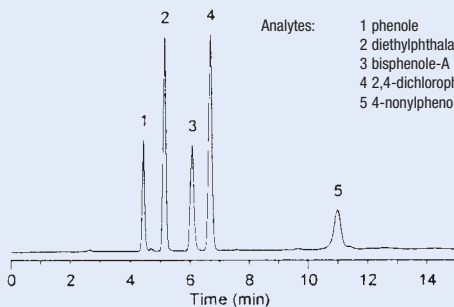
Analytes: 1 diethylphthalate
2 4-nonylphenole
3 2,4-dichlorophenole
4 phenole
5 bisphenole-A



reversed-phase-mode

Column: PerfectSil® CN-3
250 x 4.6 mm
Flow: 1.0 ml/min
Eluent: acetonitrile / 20 mM phosphate-buffer (pH 3.0) = 45/55
Temperature: 40 °C
Detection: UV @ 280 nm
Inj. volume: 1 µL

Analytes: 1 phenole
2 diethylphthalate
3 bisphenole-A
4 2,4-dichlorophenole
5 4-nonylphenole

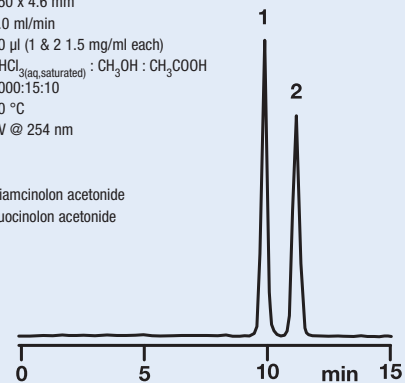


PerfectSil® 100 Si

Fluocinolon Acetonide

Column: PerfectSil® 100 Si 5 µm
150 x 4.6 mm
Flow: 1.0 ml/min
Inj. volume: 20 µl (1 & 2 1.5 mg/ml each)
Eluent: CHCl₃(aq, saturated) : CH₃OH : CH₃COOH
1000:15:10
Temperature: 30 °C
Detection: UV @ 254 nm

1 triamcinolon acetonide
2 fluocinolon acetonide



PerfectSil® 120 ODS-2

Nitrosoamine-derivatives

Column: PerfectSil® 120 ODS-2 5 µm
150 x 4.6 mm
Flow: 1.0 ml/min
Eluent: CH₃CN / 10 mM KH₂PO₄
60 / 40
Temperature: 40 °C
Detection: UV @ 230 nm

1 N-nitrosodimethylamine
2 N-nitrosodiethylamine
3 N-nitrosodi-n-propylamine
4 N-nitrosodiphenylamine

